

PART OF N.W. 1/4 OF
SECTION 3, T.5N., R.1W., S.L.B.&M.

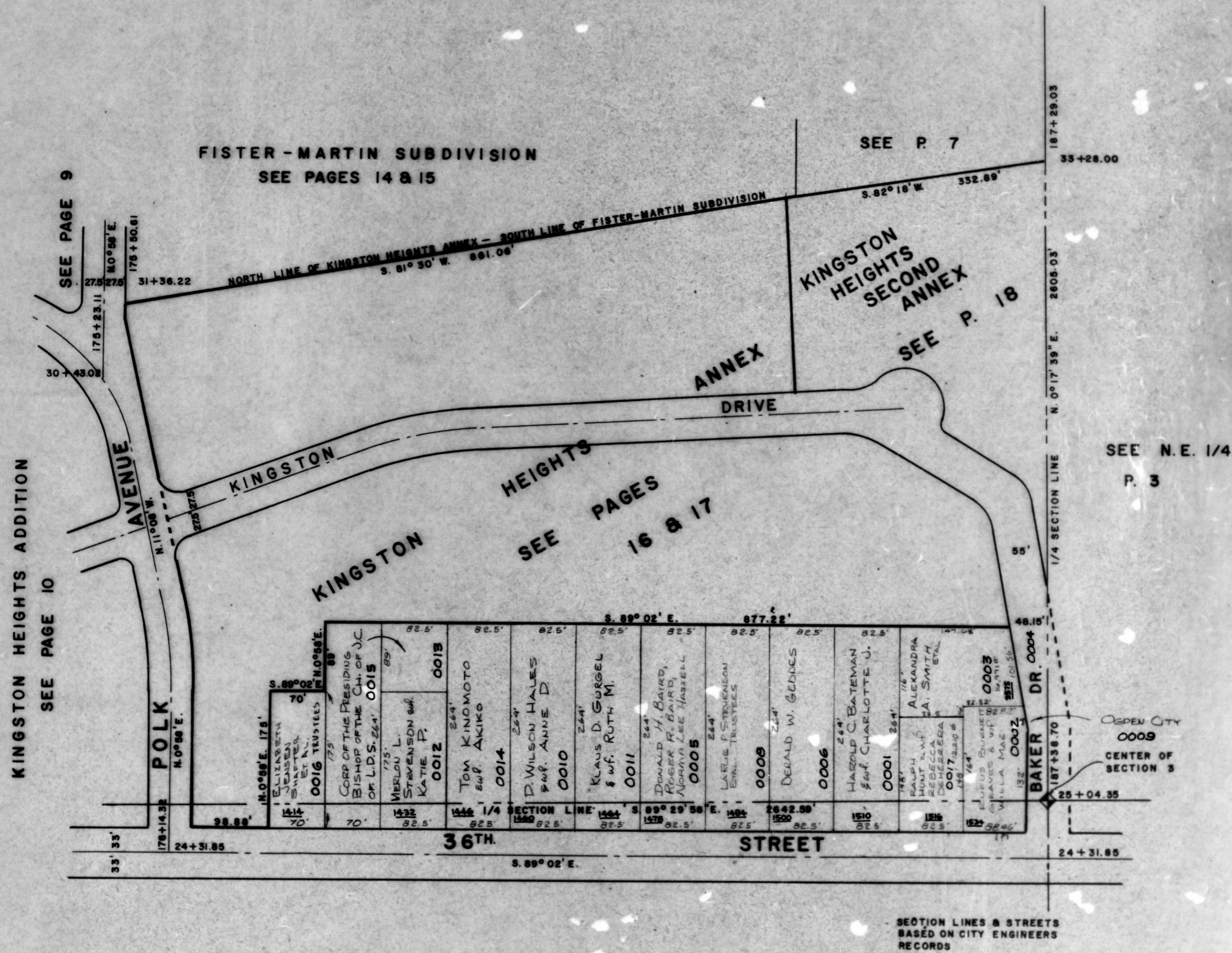
11

TAXING UNIT: 25

IN OGDEN CITY

PREFIX: 05-011

SCALE 1" = 100'



KINGSTON HEIGHTS ADDITION
SEE PAGE 10

SEE PAGE 9

FISTER - MARTIN SUBDIVISION
SEE PAGES 14 & 15

SEE P. 7

KINGSTON HEIGHTS
SECOND ANNEX

SEE P. 18

SEE PAGES
16 & 17

SEE N.E. 1/4
P. 3

SEE PAGE 25